

Roselli Arts Building

2300 East Oakland Park Boulevard, Fort Lauderdale, FL 33306



FOR LEASE
PROFESSIONAL OFFICE/RETAIL SPACE

Joseph Jarkesy, CCIM
Office: 954.890.3390
jjarkesy@CREassetadvisors.com

3471 N Federal Highway | Suite 205
Fort Lauderdale, FL 33308
www.creassetadvisors.com

PROPERTY SUMMARY

2300 East Oakland Park Boulevard, Fort Lauderdale, FL 33306



PROPERTY DESCRIPTION

CRE Asset Advisors presents the Roselli Arts Building, a three story retail/office building located in the Times Square Plaza on the south east corner of Oakland Park Blvd and Federal Hwy (US-1). The building features single studios of approximately 350 SF and double studios of approximately 700 RSF. The building's common areas were recently renovated but still maintain their sleek Midcentury- Modern Feel. Studios feature 24-hour, tenant controlled AC, free and metered parking, and 2 restaurants on the 1st floor. Time Square Plaza, the Coral Ridge Mall, Publix Supermarket and a number of other services and restaurants are within walking distance.

PROPERTY HIGHLIGHTS

- Single and double studios
- Affordable rates
- Renovated common areas
- Free Parking
- 24 Hour tenant controlled AC
- Onsite restaurants

OFFERING SUMMARY

Availability:	Single Studios - \$800 p/m
	Double Studios - \$1,600 p/m
Year Built:	1960
Building Size:	15,708 SF

Office Availability

2300 East Oakland Park Boulevard, Fort Lauderdale, FL 33306



SPACES

LEASE RATE

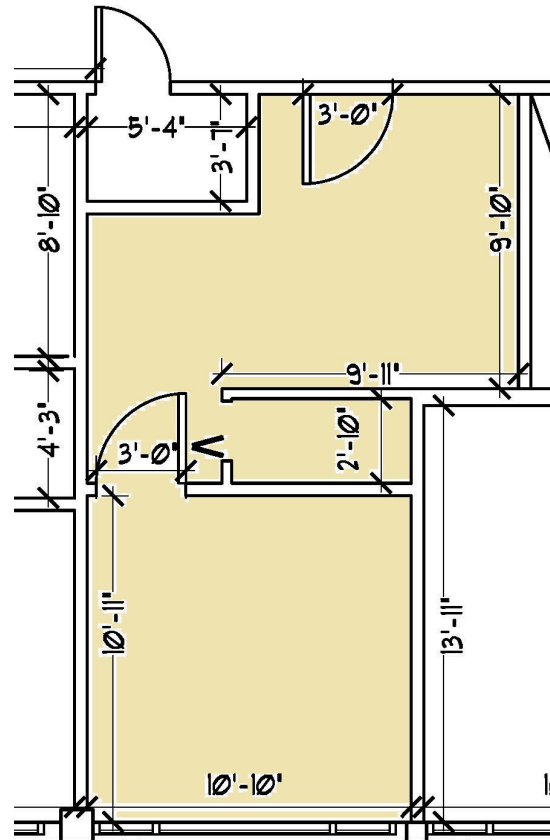
Suite 202	\$800.00
Suite 208 (private restroom/plumbing included)	\$1,600.00
Suite 300	\$1,600.00

Suite 202

2300 East Oakland Park Boulevard, Fort Lauderdale, FL 33306

\$800.00
Per Month

OFFICE SPACE

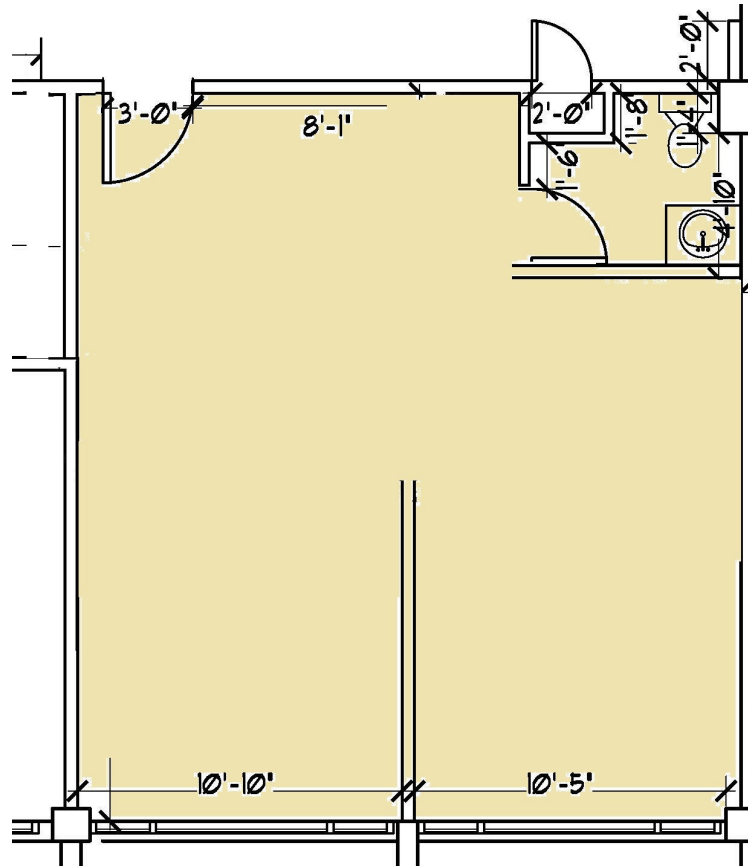


Suite 208

2300 East Oakland Park Boulevard, Fort Lauderdale, FL 33306

\$1,600.00
Per Month

OFFICE SPACE

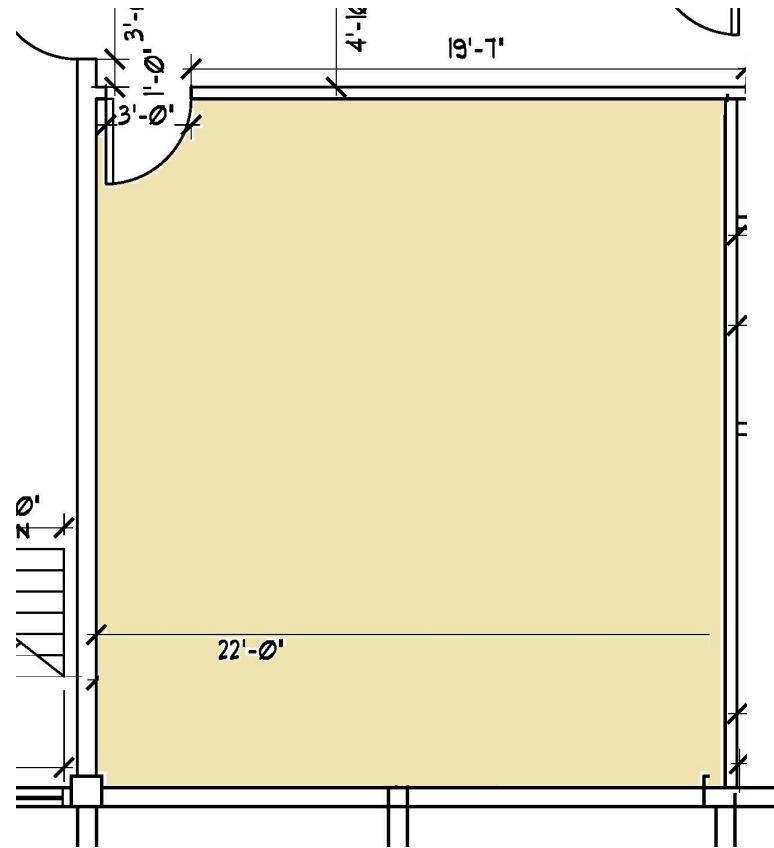


Suite 300

2300 East Oakland Park Boulevard, Fort Lauderdale, FL 33306

\$1,600.00
Per Month

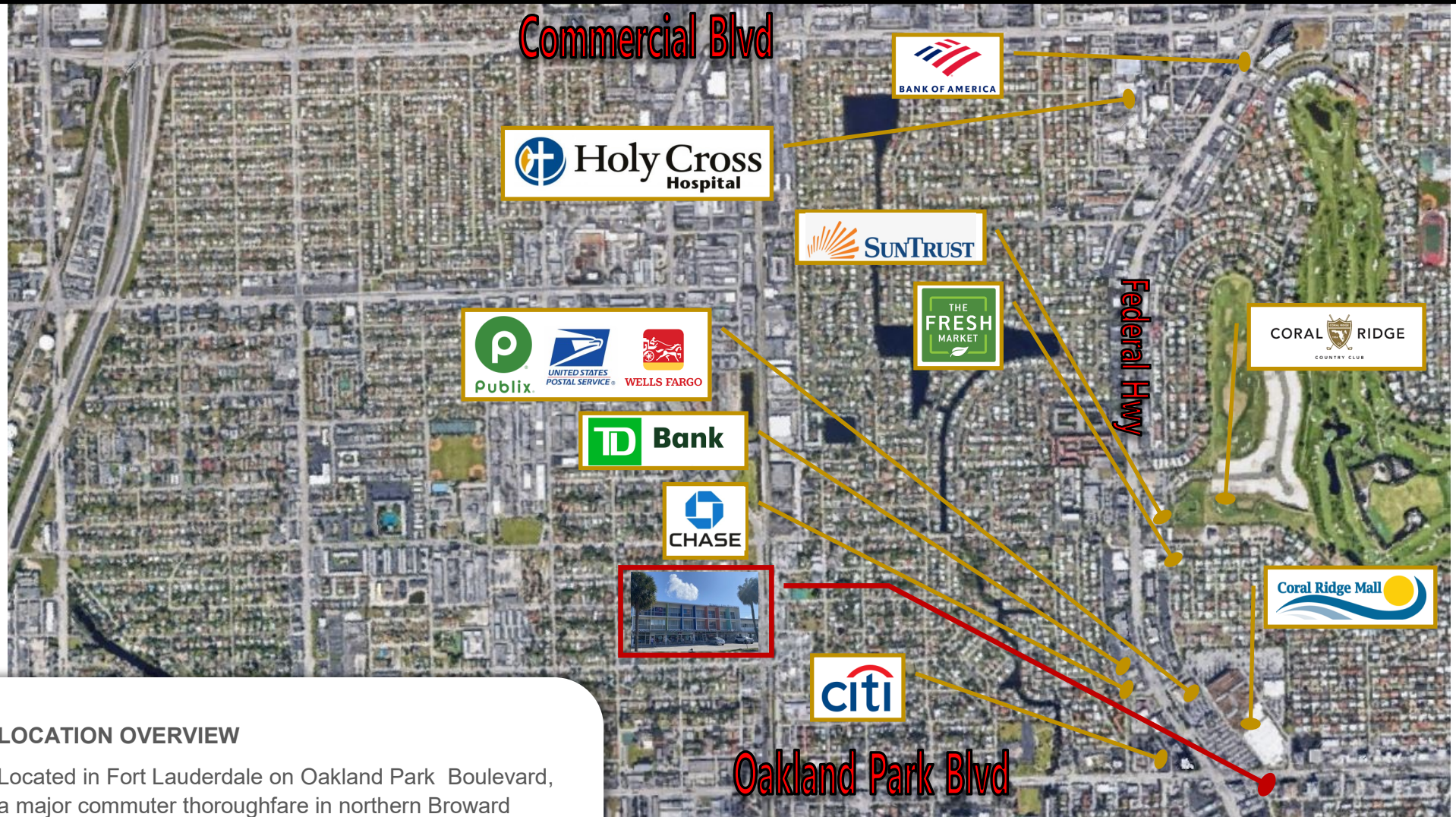
OFFICE SPACE



Roselli Arts Building

2300 East Oakland Park Boulevard, Fort Lauderdale, FL 33306

FOR LEASE



LOCATION OVERVIEW

Located in Fort Lauderdale on Oakland Park Boulevard, a major commuter thoroughfare in northern Broward County with close proximity to US-1 and less than 1 mile from the beach and Pompano Beach Air Park.

Access to I-95 is approximately 2 miles allowing easy access to and from the site from all major roadways.

Joseph Jarkesy, CCIM

Office: 954.890.3390

jjarkesy@CREassetadvisors.com

3471 N Federal Highway | Suite 205

Fort Lauderdale, FL 33308

www.creassetadvisors.com